

F722 V3

CPU STM32F722RET6

GYRO BMI270

X8 Supported

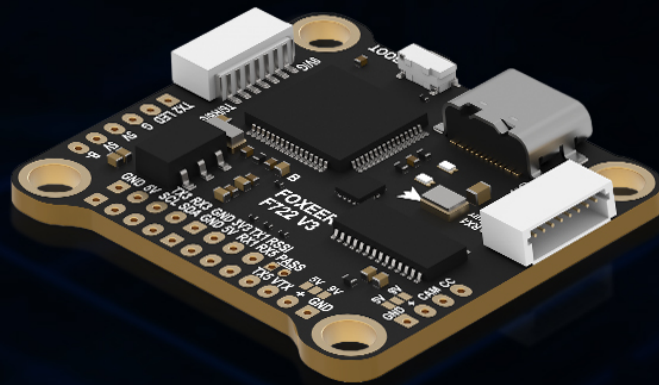
Excellent Layout

3~6S Lipo

6 × UARTs

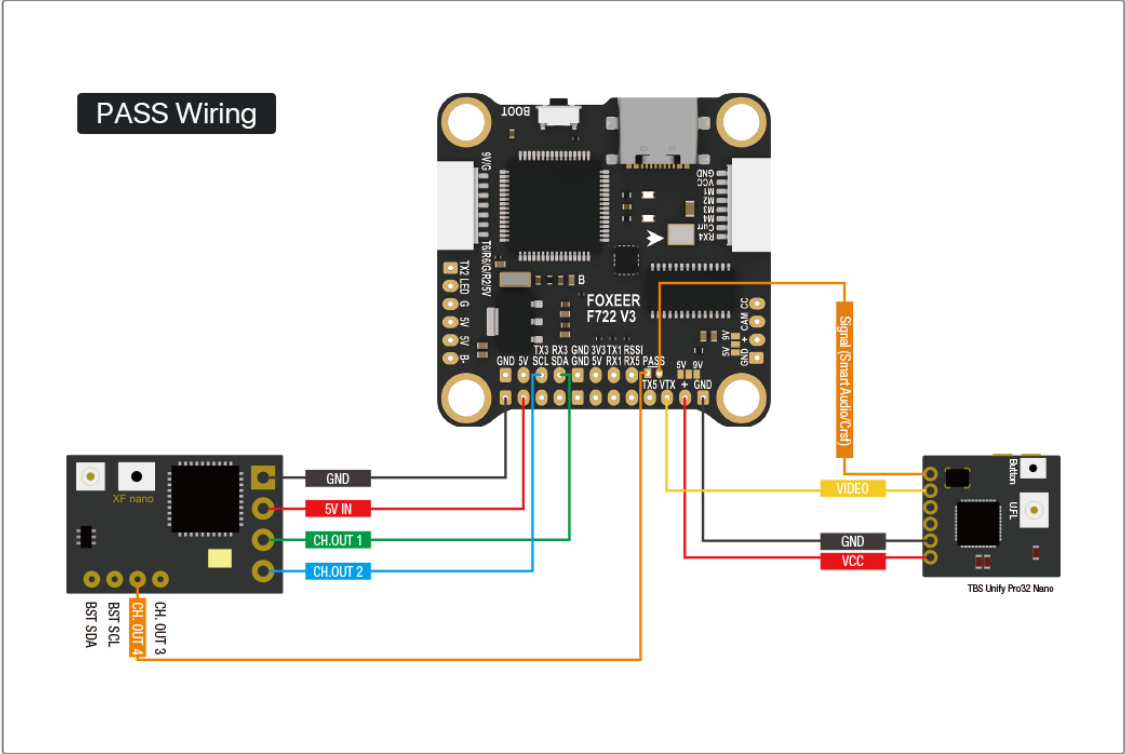
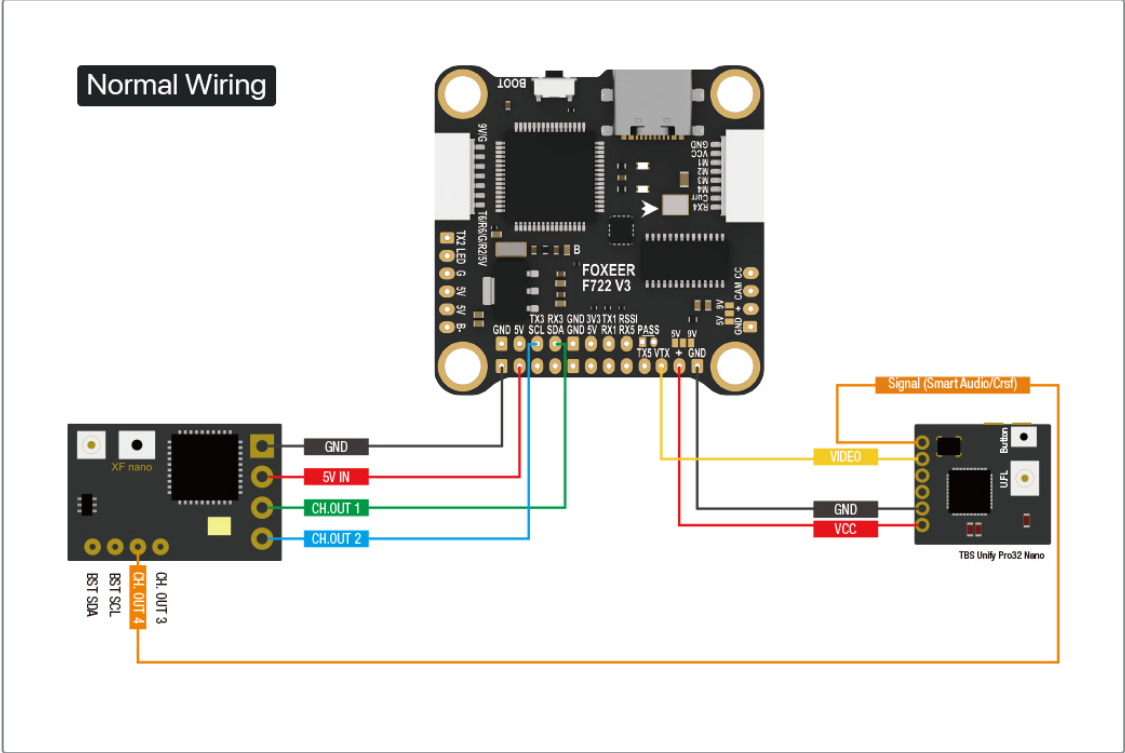
DC5V/3A; DC9V/3A

Great Filtering

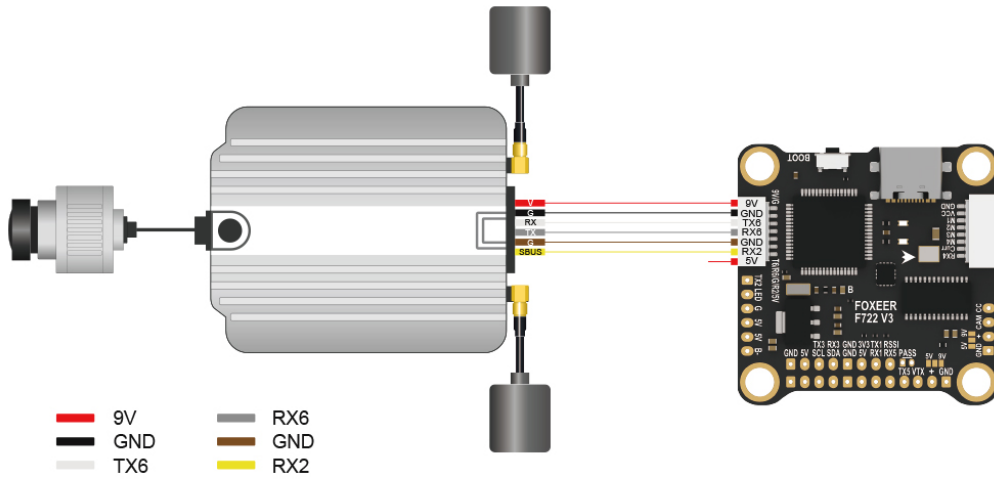


PASS Function

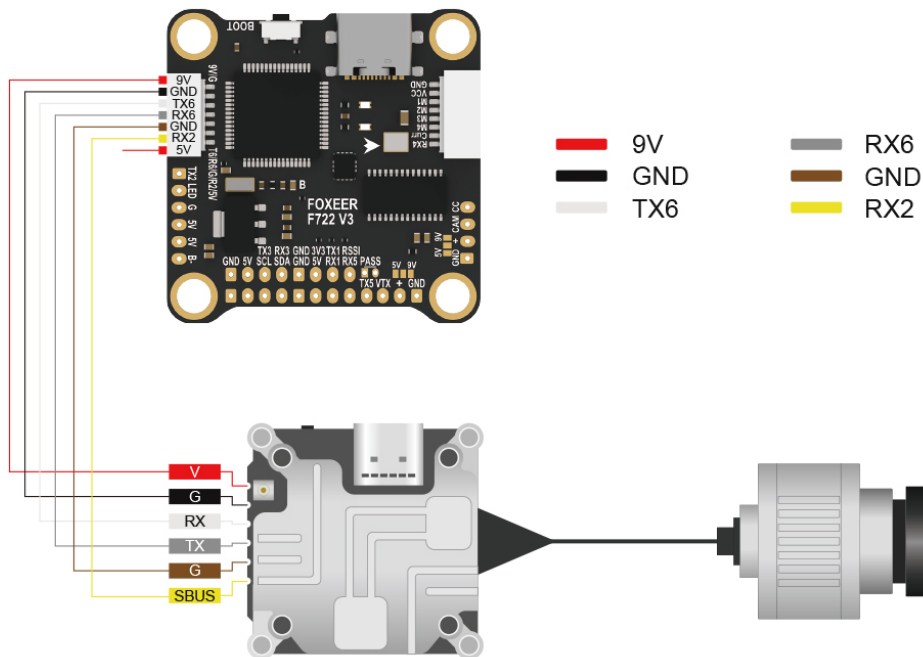
Easier to wire up the quad when using Crossfire



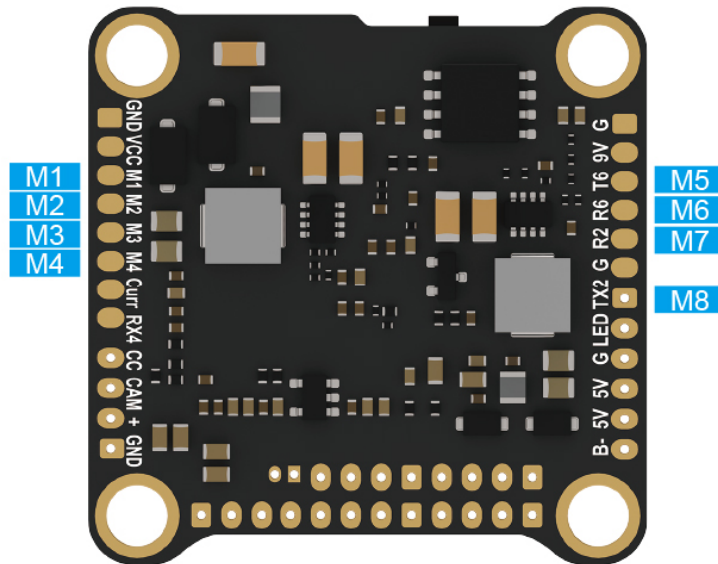
Connecting with DJI



Connecting with Vista



Connecting with X8 (Need CLI)



FOXEEER F722 V3 Flight Controller

Wiring schematic diagram

